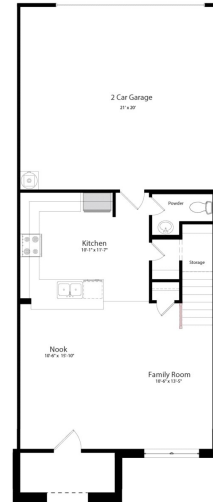


Balmoral Townhomes

\$ 267,540

12678 BEATRICE TERRACE DRIVE - BLDG 20



HOME FEATURES

HOUSTON - 159001 A

1766 sq ft / 3 BEDS / 2 BATHS / 1 PWDR

2 GARAGE / 2-STORY / MLS: 13925971

9' Ceilings Throughout First Floor

Luxury Vinyl Tile Flooring in Entry, Family Room, Kitchen, Utility & Bathrooms

42" Kitchen Cabinets with Crown Moulding

Granite Countertops with Ceramic Tile Backsplash

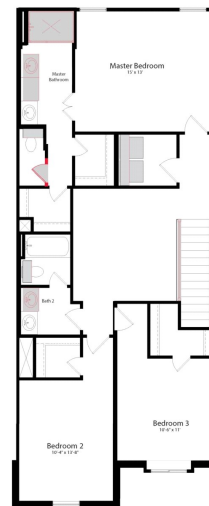
Stainless Steel Whirlpool Kitchen Appliances including Microwave

Spacious Loft

Master Suite with 60" Shower and Double Vanity with Second Sink

Full Gutters with Downspouts

Full Sod with Full Yard Irrigation System with Rotary Heads



AVAILABLE MARCH 2022

Printed: 12/27/2021 4:27:16 PM

FOR MORE INFORMATION CALL

(281) 676-3848 (o)

Mark Maranto @ 832.277.4238

Sharon Mendoza @ 832.746.5028



Home and community information, including pricing, included features, terms, availability and amenities, are subject to change and prior sale at any time without notice or obligation. Drawings, pictures, photographs, video, square footages, floor plans, elevations, features, colors and sizes are approximate for illustration purposes only and will vary from the home as built. Images do not reflect a racial or ethnic preference. Nothing on our website should be construed as legal, accounting or tax advice. Incentives and seller contributions may require the use of certain lenders or title companies, some of which may be affiliates of HISTORYMAKER Homes, and could affect your loan amount. Not all people will qualify for all offers. Promotional offers are typically limited to specific homes and communities and are subject to terms and conditions. Plans, elevations, dimensions, and treatments may vary between communities. Please consult a HISTORYMAKER Homes sales agent and review a home sales contract for additional information, disclosures and disclaimers. Balmoral Townhomes is a community by Balmoral Townhomes, LLC, a Texas limited liability company

15803 Perthshire Creek Drive, Humble, TX 77346