

Waterscape 50s

\$ 352,041

3094 AQUEDUCT AVENUE



REPRESENTATIVE IMAGE*

HOME FEATURES

EMORY - 185601 R

1824 sq ft / 4 BEDS / 2 BATHS

2 GARAGE / 1-STORY

9' Ceilings Throughout

Luxury Vinyl Tile Flooring in Entry, Family Room, Kitchen, Nook & Utility

42" White Kitchen Cabinets with Crown Moulding & Kitchen Island

Granite Countertops with Ceramic Tile Backsplash

Stainless Steel Whirlpool Kitchen Appliances including Microwave

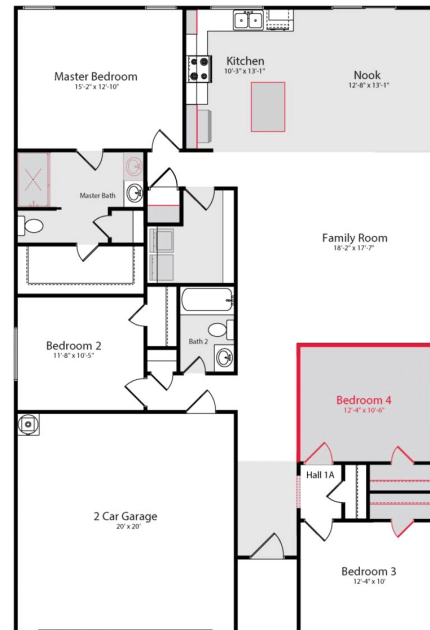
Energy Saving Insulation & Vinyl Windows

Master Suite with 60" Shower and Double Vanity with Second Sink

Full Sod with Full Yard Irrigation System with Rotary Heads

AVAILABLE MARCH 2022

Printed: 2/16/2022 5:47:15 AM



**FOR MORE INFORMATION CALL
(972) 993-8926 (o)**

Salicia Gregory @ 972.979.8921



Home and community information, including pricing, included features, terms, availability and amenities, are subject to change and prior sale at any time without notice or obligation. Drawings, pictures, photographs, video, square footages, floor plans, elevations, features, colors and sizes are approximate for illustration purposes only and will vary from the home as built. Images do not reflect a racial or ethnic preference. Home prices refer to the base price of the house and do not include options or premiums, unless otherwise indicated for a specific home. Nothing on our website should be construed as legal, accounting or tax advice. Incentives and seller contributions may require the use of certain lenders or title companies, some of which may be affiliates of HISTORYMAKER Homes, and could affect your loan amount. Not all people will qualify for all offers. Promotional offers are typically limited to specific homes and communities and are subject to terms and conditions. Plans, elevations, dimensions, and treatments may vary between communities. Please consult a HISTORYMAKER Homes sales agent and review a home sales contract for additional information, disclosures and disclaimers.

1018 Watercourse Place, Royse City, TX 75189