

**Northstar 50s**

**\$ 368,653**

**2016 GILL STAR DRIVE**



**REPRESENTATIVE IMAGE\***

## HOME FEATURES

### **COTTONWOOD - 194101 K**

1952 sq ft / 4 BEDS / 2 BATHS

2 GARAGE / 1-STORY

9' Ceilings Throughout

Tile Flooring in Entry, Utility, Kitchen, Nook & Bathrooms

42" Espresso Kitchen Cabinets & Kitchen Island

Granite Countertops

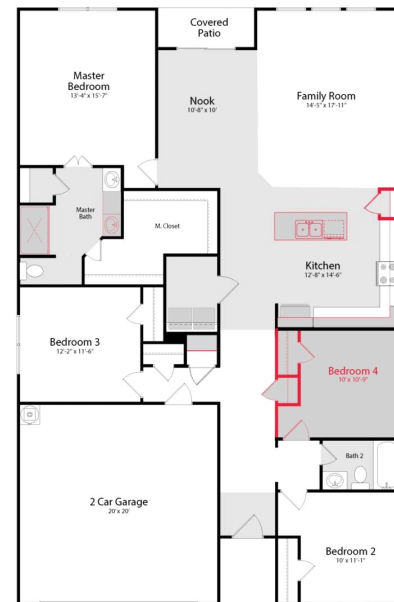
Stainless Steel Whirlpool Kitchen Appliances including Microwave

Energy Saving Insulation & Vinyl Windows

Master Suite with 60" Shower and Double Vanity with Second Sink

Full Sod and Full Irrigation System with Rotary Heads

Covered Patio



**AVAILABLE MARCH 2022**

Printed: 1/6/2022 6:28:02 AM

**FOR MORE INFORMATION CALL**

**(817) 339-6284 (o)**

Bobbie Johnson @ 214.734.8582

Mark Conner @ 817.682.4192



Home and community information, including pricing, included features, terms, availability and amenities, are subject to change and prior sale at any time without notice or obligation. Drawings, pictures, photographs, video, square footages, floor plans, elevations, features, colors and sizes are approximate for illustration purposes only and will vary from the home as built. Images do not reflect a racial or ethnic preference. Home prices refer to the base price of the house and do not include options or premiums, unless otherwise indicated for a specific home. Nothing on our website should be construed as legal, accounting or tax advice. Incentives and seller contributions may require the use of certain lenders or title companies, some of which may be affiliates of HISTORYMAKER Homes, and could affect your loan amount. Not all people will qualify for all offers. Promotional offers are typically limited to specific homes and communities and are subject to terms and conditions. Plans, elevations, dimensions, and treatments may vary between communities. Please consult a HISTORYMAKER Homes sales agent and review a home sales contract for additional information, disclosures and disclaimers.

**3061 Northstar Parkway, Fort Worth, TX 76052**