

FOR SALE



Burgess Meadows 50s

115 Driftwood Drive



\$ 311,990

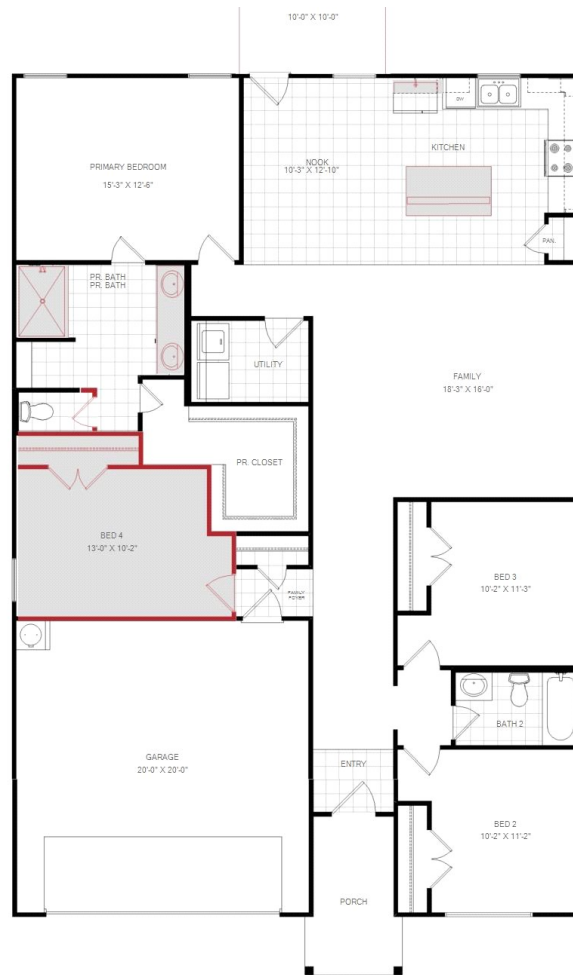
Available Now!

Emory II - 185602 J

1853 sq ft / 4 BEDS / 2 BATHS

2 Garage

1-Story



MODEL: 3146 Manchester Drive, Cleburne, TX 76031

Lindsay Vannoy: 214.732.6934 | Harlee Owen: 682.256.0712

FOR MORE INFORMATION CALL:

(817) 953-3656

Home and community information, including pricing, included features, terms, availability and amenities, are subject to change and prior sale at any time without notice or obligation. Drawings, pictures, photographs, video, square footages, floor plans, elevations, features, colors and sizes are approximate for illustration purposes only and will vary from the home as built. Images do not reflect a racial or ethnic preference. Home prices refer to the base price of the house and do not include options or premiums, unless otherwise indicated for a specific home. Nothing on our website should be construed as legal, accounting or tax advice. Incentives and seller contributions may require the use of certain lenders or title companies, some of which may be affiliates of HISTORYMAKER Homes, and could affect your loan amount. Not all people will qualify for all offers. Promotional offers are typically limited to specific homes and communities and are subject to terms and conditions. Plans, elevations, dimensions, and treatments may vary between communities. Please consult a HISTORYMAKER Homes sales agent and review a home sales contract for additional information, disclosures and disclaimers.

