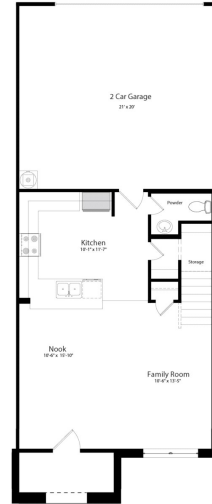


**Sienna Townhomes at Parkway Place
- 2**

\$ 328,990

2922 SCANLAN MEADOW - BLDG 19



HOME FEATURES

HOUSTON - 159001 A

1767 sq ft / 3 BEDS / 2 BATHS / 1 PWDR

2 GARAGE / 2-STORY

9' Ceilings Throughout First Floor

Wood Plank Tile Flooring Throughout First Floor
Living Areas

36" Kitchen Cabinets with Crown Moulding

Granite Countertops with Ceramic Tile Backsplash

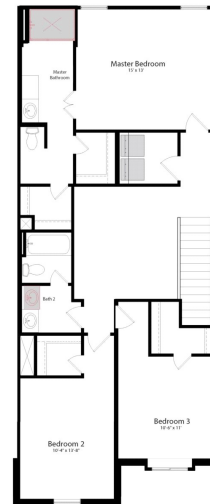
Stainless Steel Whirlpool Kitchen Appliances

2" Faux Wood Blinds

Master Suite Includes Dual Walk In Closets and
60" Shower

Full Gutters and Downspouts

Full Irrigation System with Rotary Heads



UNDER CONSTRUCTION

Printed: 6/25/2024 5:51:22 AM

FOR MORE INFORMATION CALL

(281) 786-3253 (o)

Mark Maranto @ 832.277.4238

Jose Gonzalez @ 832.597.1309



Home and community information, including pricing, included features, terms, availability and amenities, are subject to change and prior sale at any time without notice or obligation. Drawings, pictures, photographs, video, square footages, floor plans, elevations, features, colors and sizes are approximate for illustration purposes only and will vary from the home as built. Images do not reflect a racial or ethnic preference. Nothing on our website should be construed as legal, accounting or tax advice. Incentives and seller contributions may require the use of certain lenders or title companies, some of which may be affiliates of HISTORYMAKER Homes, and could affect your loan amount. Not all people will qualify for all offers. Promotional offers are typically limited to specific homes and communities and are subject to terms and conditions. Plans, elevations, dimensions, and treatments may vary between communities. Please consult a HISTORYMAKER Homes sales agent and review a home sales contract for additional information, disclosures and disclaimers. Sienna Townhomes at Parkway Place - 2 is a community by Sienna Townhomes, LLC, a Texas limited liability company

8047 Scanlan Trace, Missouri City, TX 77459