

Liberty at Providence 50s

\$ 479,990

10064 PAINE DRIVE



REPRESENTATIVE IMAGE *

HOME FEATURES

ALDER - 323101 Q

3058 sq ft / 4 BEDS / 4 BATHS

2 GARAGE / 2-STORY

9' Ceilings Throughout First Floor

Luxury Vinyl Plank Flooring in Living Areas

White 42" Kitchen Cabinets with Crown Moulding

Quartz Countertops with Ceramic Tile Backsplash

Stainless Steel Whirlpool Kitchen Appliances

Spacious Game Room and Media Room on Second Floor

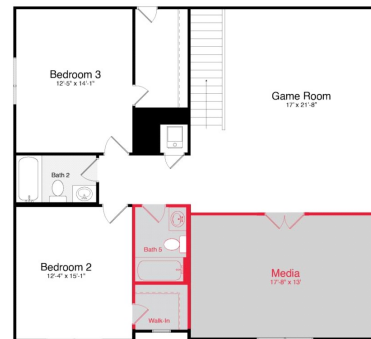
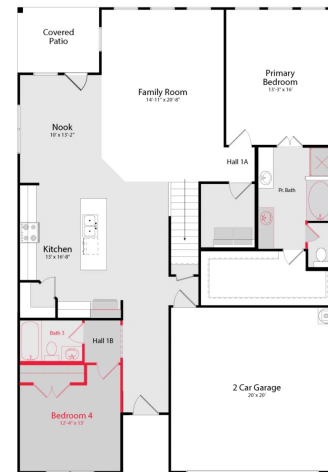
Master Suite Includes Garden Tub with Separate Shower

Full Sod and Irrigation System with Rotary Heads

Covered Patio

AVAILABLE NOW!

Printed: 5/17/2024 4:11:02 AM



FOR MORE INFORMATION CALL
(940) 293-1106 (o)

Britni Gartin @ 806.433.2341

Nick Moscati @ 469.744.4128



Home and community information, including pricing, included features, terms, availability and amenities, are subject to change and prior sale at any time without notice or obligation. Drawings, pictures, photographs, video, square footages, floor plans, elevations, features, colors and sizes are approximate for illustration purposes only and will vary from the home as built. Images do not reflect a racial or ethnic preference. Home prices refer to the base price of the house and do not include options or premiums, unless otherwise indicated for a specific home. Nothing on our website should be construed as legal, accounting or tax advice. Incentives and seller contributions may require the use of certain lenders or title companies, some of which may be affiliates of HISTORYMAKER Homes, and could affect your loan amount. Not all people will qualify for all offers. Promotional offers are typically limited to specific homes and communities and are subject to terms and conditions. Plans, elevations, dimensions, and treatments may vary between communities. Please consult a HISTORYMAKER Homes sales agent and review a home sales contract for additional information, disclosures and disclaimers.

6029 Pitcher Way, Providence Village, TX 76227