

Palmilla Springs 40s

\$ 349,000

2938 DIXONDALE DRIVE



REPRESENTATIVE IMAGE *

HOME FEATURES

TELFAIR - 205601 B

2062 sq ft / 4 BEDS / 3 BATHS

2 GARAGE / 2-STORY

9' Ceilings Throughout First Floor

Wood Plank Tile Flooring Throughout Living Area

White 42" Kitchen Cabinets with Crown Moulding

Granite Countertops with Ceramic Tile Backsplash

Stainless Steel Whirlpool Kitchen Appliances

Spacious Study

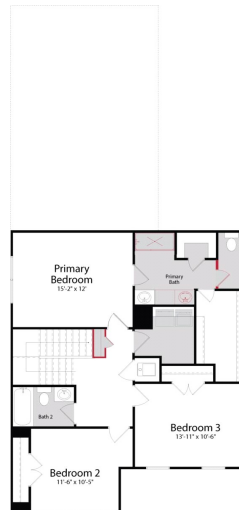
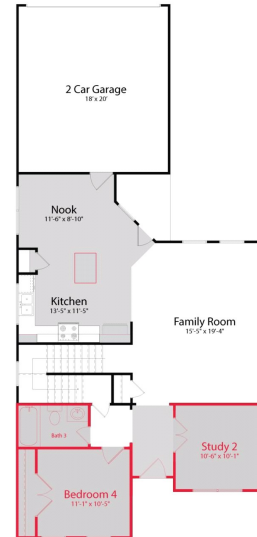
Master Suite Includes Dual Sink Vanity and 60" Shower

Vinyl Windows and Energy Saving Insulation

Covered Patio

UNDER CONSTRUCTION

Printed: 5/12/2024 5:15:47 AM



FOR MORE INFORMATION CALL

(682) 628-9144 (o)

Amy Benton @ 817.996.9857

Johnny Ayala @ 817.495.1815



Home and community information, including pricing, included features, terms, availability and amenities, are subject to change and prior sale at any time without notice or obligation. Drawings, pictures, photographs, video, square footages, floor plans, elevations, features, colors and sizes are approximate for illustration purposes only and will vary from the home as built. Images do not reflect a racial or ethnic preference. Home prices refer to the base price of the house and do not include options or premiums, unless otherwise indicated for a specific home. Nothing on our website should be construed as legal, accounting or tax advice. Incentives and seller contributions may require the use of certain lenders or title companies, some of which may be affiliates of HISTORYMAKER Homes, and could affect your loan amount. Not all people will qualify for all offers. Promotional offers are typically limited to specific homes and communities and are subject to terms and conditions. Plans, elevations, dimensions, and treatments may vary between communities. Please consult a HISTORYMAKER Homes sales agent and review a home sales contract for additional information, disclosures and disclaimers.

2820 Fox Trail Lane, Fort Worth, TX 76108