

Waterscape 40s

\$ 299,990

8030 GROTTO DRIVE



HOME FEATURES

CRAWFORD - 162501 G

1605 sq ft / 3 BEDS / 2 BATHS

2 GARAGE / 1-STORY

9' Ceilings Throughout First Floor

Wood Plank Tile Flooring in Living Areas

Quartz Kitchen Countertops

42" Kitchen Cabinets with Crown Moulding

Stainless Steel Whirlpool Appliances

Large Kitchen Island

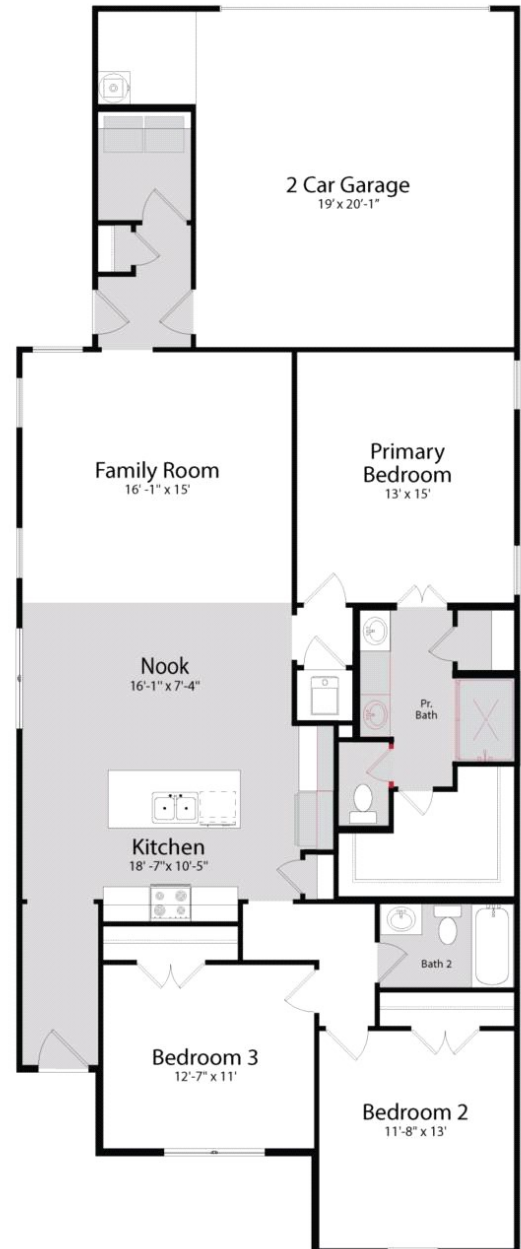
Master Suite Includes 60" Shower with Dual Sink Vanity

Energy Saving Insulation

Vinyl Windows

AVAILABLE NOW!

Printed: 5/18/2024 4:34:48 AM



FOR MORE INFORMATION CALL
(972) 993-8926 (o)

Susan Washington @ 972.757.9212

Garrett Ford @ 817.271.2257



Home and community information, including pricing, included features, terms, availability and amenities, are subject to change and prior sale at any time without notice or obligation. Drawings, pictures, photographs, video, square footages, floor plans, elevations, features, colors and sizes are approximate for illustration purposes only and will vary from the home as built. Images do not reflect a racial or ethnic preference. Home prices refer to the base price of the house and do not include options or premiums, unless otherwise indicated for a specific home. Nothing on our website should be construed as legal, accounting or tax advice. Incentives and seller contributions may require the use of certain lenders or title companies, some of which may be affiliates of HISTORYMAKER Homes, and could affect your loan amount. Not all people will qualify for all offers. Promotional offers are typically limited to specific homes and communities and are subject to terms and conditions. Plans, elevations, dimensions, and treatments may vary between communities. Please consult a HISTORYMAKER Homes sales agent and review a home sales contract for additional information, disclosures and disclaimers.

1018 Watercourse Place, Royse City, TX 75189
