

Cloverleaf Crossing Townhomes

\$ 293,990

2864 BANE BERRY LANE - BLDG 34

HOME FEATURES

TRAVIS - 147001 B

1477 sq ft / 3 BEDS / 2 BATHS / 1 PWDR

2 GARAGE / 2-STORY

9' Ceilings Throughout First Floor

Wood Plank Tile Flooring Throughout Living Area

Espresso 30" Kitchen Cabinets with Crown Moulding

Stainless Steel Whirlpool Kitchen Appliances

Large Kitchen Island

Master Suite Includes Dual Sink Vanity and 60" Shower

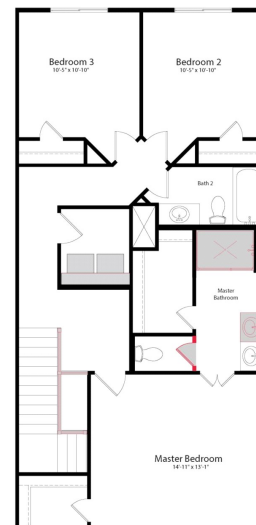
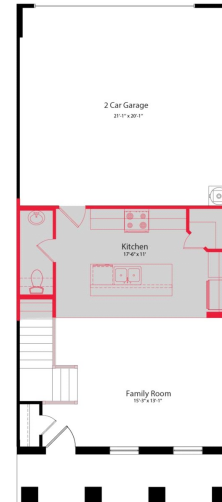
Energy Saving Insulation and Vinyl Windows

Full Sod

Irrigation System with Rotary Heads

AVAILABLE NOW!

Printed: 10/4/2023 4:04:47 AM



**FOR MORE INFORMATION CALL
(469) 259-2596 (o)**

Amy Templin @ 469.450.5060



Home and community information, including pricing, included features, terms, availability and amenities, are subject to change and prior sale at any time without notice or obligation. Drawings, pictures, photographs, video, square footages, floor plans, elevations, features, colors and sizes are approximate for illustration purposes only and will vary from the home as built. Images do not reflect a racial or ethnic preference. Nothing on our website should be construed as legal, accounting or tax advice. Incentives and seller contributions may require the use of certain lenders or title companies, some of which may be affiliates of HISTORYMAKER Homes, and could affect your loan amount. Not all people will qualify for all offers. Promotional offers are typically limited to specific homes and communities and are subject to terms and conditions. Plans, elevations, dimensions, and treatments may vary between communities. Please consult a HISTORYMAKER Homes sales agent and review a home sales contract for additional information, disclosures and disclaimers. Cloverleaf Crossing Townhomes is a community by Cloverleaf Townhomes, LLC, a Texas limited liability company

3001 Percheron Drive, Mesquite, TX 75150