

Sienna Townhomes at Parkway Place

\$ 304,990

8024 SCANLAN TRAIL - BLDG 11

HOME FEATURES

CROCKETT - 170001 D

1766 sq ft / 3 BEDS / 2 BATHS / 1 PWDR

2 GARAGE / 2-STORY

9' Ceilings Throughout First Floor

Luxury Vinyl Plank Flooring in Entry, Family Room, Kitchen & Nook

42" White Kitchen Cabinets with Crown Moulding

Quartz Countertops with Ceramic Tile Backsplash

Stainless Steel Whirlpool Kitchen Appliances including Microwave

Energy Saving Insulation & Vinyl Windows

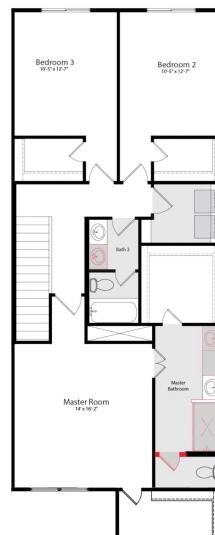
Master Suite with 60" Shower and Double Vanity with Second Sink

Full Gutters with Downspouts

Full Yard Sod with Full Irrigation System with Rotary Heads

AVAILABLE NOW!

Printed: 8/23/2023 4:36:28 AM



FOR MORE INFORMATION CALL

(281) 786-3253 (o)

Mark Maranto @ 832.277.4238

Langston Grady @ 210.889.1672



Home and community information, including pricing, included features, terms, availability and amenities, are subject to change and prior sale at any time without notice or obligation. Drawings, pictures, photographs, video, square footages, floor plans, elevations, features, colors and sizes are approximate for illustration purposes only and will vary from the home as built. Images do not reflect a racial or ethnic preference. Nothing on our website should be construed as legal, accounting or tax advice. Incentives and seller contributions may require the use of certain lenders or title companies, some of which may be affiliates of HISTORYMAKER Homes, and could affect your loan amount. Not all people will qualify for all offers. Promotional offers are typically limited to specific homes and communities and are subject to terms and conditions. Plans, elevations, dimensions, and treatments may vary between communities. Please consult a HISTORYMAKER Homes sales agent and review a home sales contract for additional information, disclosures and disclaimers. Sienna Townhomes at Parkway Place is a community by Sienna Townhomes, LLC, a Texas limited liability company

8047 Scanlan Trace, Missouri City, TX 77459