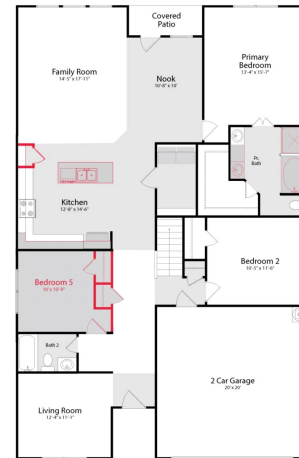


Palmilla Springs 50s

\$ 440,654

10913 ELATA DRIVE



HOME FEATURES

WALNUT - 260101 H

2619 sq ft / 4 BEDS / 3 BATHS

2 GARAGE / 2-STORY

9' Ceilings Throughout First Floor

Wood Plank Tile Flooring in Entry, Living Room, Kitchen, Nook & Family Room

42" Espresso Kitchen Cabinets, Crown Moulding and Kitchen Island

Granite Countertops

Stainless Steel Whirlpool Kitchen Appliances including Microwave

Spacious Gameroom

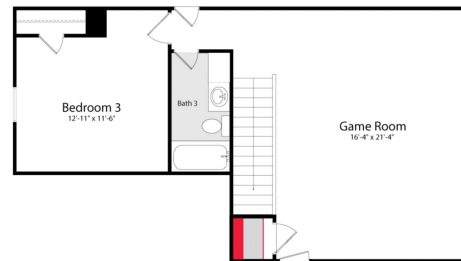
Master Suite with Garden Tub, Separate Shower with Double Vanity & Second Sink

Full Yard Sod with Full Irrigation with Rotary Heads

Covered Patio

UNDER CONSTRUCTION

Printed: 1/27/2023 4:40:36 AM



FOR MORE INFORMATION CALL

(682) 628-9144 (o)

Amy Benton @ 817.996.9857

Alice M Cordova @ 682.583.6760



Home and community information, including pricing, included features, terms, availability and amenities, are subject to change and prior sale at any time without notice or obligation. Drawings, pictures, photographs, video, square footages, floor plans, elevations, features, colors and sizes are approximate for illustration purposes only and will vary from the home as built. Images do not reflect a racial or ethnic preference. Home prices refer to the base price of the house and do not include options or premiums, unless otherwise indicated for a specific home. Nothing on our website should be construed as legal, accounting or tax advice. Incentives and seller contributions may require the use of certain lenders or title companies, some of which may be affiliates of HISTORYMAKER Homes, and could affect your loan amount. Not all people will qualify for all offers. Promotional offers are typically limited to specific homes and communities and are subject to terms and conditions. Plans, elevations, dimensions, and treatments may vary between communities. Please consult a HISTORYMAKER Homes sales agent and review a home sales contract for additional information, disclosures and disclaimers.