

Cloverleaf Crossing Townhomes

\$ 297,840

2909 MARE DRIVE - BLDG 28

HOME FEATURES

TRAVIS - 147001 B

1477 sq ft / 3 BEDS / 2 BATHS / 1 PWDR

2 GARAGE / 2-STORY

9' Ceilings Throughout First Floor

Luxury Vinyl Tile Flooring in Entry, Family Room, Kitchen, Utility & Bathrooms

Espresso Kitchen Cabinets with Crown Moulding

Surface Mount LED Lights in Kitchen

Stainless Steel Whirlpool Kitchen Appliances including Microwave

Spacious Loft

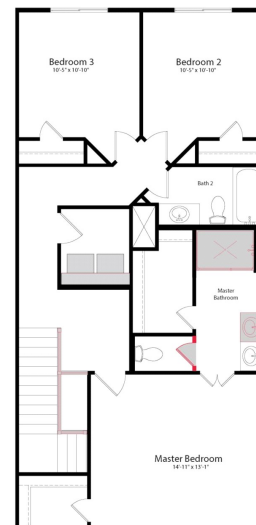
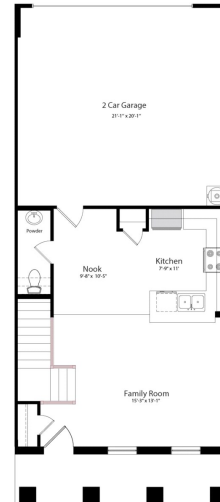
Master Suite with 60" Shower and Double Vanity with Second Sink

Full Gutters with Downspouts

Full Yard Sod with Full Irrigation System with Rotary Heads

AVAILABLE NOW!

Printed: 3/29/2023 4:04:31 AM



FOR MORE INFORMATION CALL

(469) 259-2596 (o)

Amy Templin @ 469.450.5060

Brian Joyce @ 469.388.4830



Home and community information, including pricing, included features, terms, availability and amenities, are subject to change and prior sale at any time without notice or obligation. Drawings, pictures, photographs, video, square footages, floor plans, elevations, features, colors and sizes are approximate for illustration purposes only and will vary from the home as built. Images do not reflect a racial or ethnic preference. Nothing on our website should be construed as legal, accounting or tax advice. Incentives and seller contributions may require the use of certain lenders or title companies, some of which may be affiliates of HISTORYMAKER Homes, and could affect your loan amount. Not all people will qualify for all offers. Promotional offers are typically limited to specific homes and communities and are subject to terms and conditions. Plans, elevations, dimensions, and treatments may vary between communities. Please consult a HISTORYMAKER Homes sales agent and review a home sales contract for additional information, disclosures and disclaimers. Cloverleaf Crossing Townhomes is a community by Cloverleaf Townhomes, LLC, a Texas limited liability company

3001 Percheron Drive, Mesquite, TX 75150