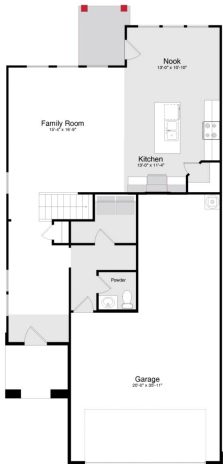


Artesia Village **\$ 345,499**

120 WEDGEWOOD TRACE LANE



HOME FEATURES

SWEETWATER - 250001 K

- 2482 sq ft / 4 BEDS / 2 BATHS / 1 PWDR
- 3 GARAGE / 2-STORY
- 9' Ceilings Throughout First Floor
- Luxury Vinyl Tile Flooring in Entry, Utility, Family Room, Kitchen & Nook
- 42" Espresso Kitchen Cabinets, Crown Moulding and Kitchen Island
- Quartz Countertops with Ceramic Tile Backsplash
- Stainless Steel Whirlpool Kitchen Appliances including Microwave
- Spacious Gameroom
- Master Suite with Garden Tub & Separate Shower with Double Vanity & Second Sink
- Full Yard Sod with Full Irrigation with Rotary Heads
- Extended Covered Patio



AVAILABLE NOW!

Printed: 1/27/2023 4:06:28 AM

FOR MORE INFORMATION CALL

(281) 676-3849 (o)

Bobby Ayers @ 832.876.0786



Home and community information, including pricing, included features, terms, availability and amenities, are subject to change and prior sale at any time without notice or obligation. Drawings, pictures, photographs, video, square footages, floor plans, elevations, features, colors and sizes are approximate for illustration purposes only and will vary from the home as built. Images do not reflect a racial or ethnic preference. Home prices refer to the base price of the house and do not include options or premiums, unless otherwise indicated for a specific home. Nothing on our website should be construed as legal, accounting or tax advice. Incentives and seller contributions may require the use of certain lenders or title companies, some of which may be affiliates of HISTORYMAKER Homes, and could affect your loan amount. Not all people will qualify for all offers. Promotional offers are typically limited to specific homes and communities and are subject to terms and conditions. Plans, elevations, dimensions, and treatments may vary between communities. Please consult a HISTORYMAKER Homes sales agent and review a home sales contract for additional information, disclosures and disclaimers.